

# TC DESCRIPTION

ALL DETAILS "ABOUT"



Vessel's name	FORWARD t.b.n.
Vessel's former name(s)	n/a
Type of vessel	BULK CARRIER
IMO Number	t.b.a.
Call sign	t.b.a.
Flag	Marshall Islands
Port of Registration	Majuro
Yard	TBD
Built	TBD
Class	ABS +A1, bulk Carrier BC-A (holds 2, 4 and 6 may be empty), AMS, +ACCU CSR, AB-CM, TCM, ESP, PMA, BWT, GFS (DFD)

GT	46,000
NT	t.b.a.
Panama Canal tonnage	t.b.a.
Suez Canal tonnage	t.b.a.
Loa (m)	229.00
Lbp (m)	225.50
Beam (m)	32.24
Depth moulded (m)	20.10
Air draft (above keel)(m)	44
TPC	t.b.a.
Number of holds/hatches	7/7

Main Engine	Wärtsilä 31 DF 8V + Wärtsilä 31 DF 10V
MCR (kw)	4,400 + 5,500
Aux. Engines	Shaft Gens. 2 x 1,150 kw. No additional D/Gens
Propeller	CPP

CUBIC BREAKDOWN	GRAIN (CBM)
No. 1	11,300
No. 2	14,300
No. 3	14,300
No. 4	14,300
No. 5	14,300
No. 6	14,300
No. 7	14,300
Total	96,500
A60 BULKHEAD FITTED IN HOLD NUMBER 7	

TANK CAPACITIES (CMB)	
LNG	2,570
LSFO / LSMGO	1,380
LO	100
Fresh Water	400

Holding washing water	300
Grey water	50
Black water	30
Ballast	25,000
Ballast incl. hold	39,300
Ballast pumps	2 x 1,250 m3/hour
Constants	t.b.a.

DEADWEIGHT (MT)	MAX DRAFT (M)
Summer (SSW) 83,500	14.45 m
Winter (WSW)	t.b.a.
Tropical (TSW)	t.b.a.
Tropical (TFW)	t.b.a.

DIMENSIONS OF CARGO HATCH openings	
Hatch type:	Side rolling
Weather deck (L x B [m])	
No. 1	15.12X13.50
No. 2	17.10X15.00
No. 3	17.10X15.00
No. 4	15.30X15.00
No. 5	15.30X15.00
No. 6	17.10X15.00
No. 7	17.10X15.00
TANKTOP DIMENSIONS	t.b.a.

PERFORMANCE (ALL FIGS. ARE ABOUT)			
Fuel specification:	Speed / Condition	LNG MMBtu + Pilot Fuel	MT LSFO / LSMGO
Speed/Consumption:	14.00 kn / Laden	1,250 + 0.4	32
	14.00 kn / Ballast	1,000 + 0.4	25
Slow steaming/ECO :	12.00 kn / Laden	850 + 0.3	21
	12.00 kn / Ballast	650 + 0.2	16
In Port		110 + 0.1	2

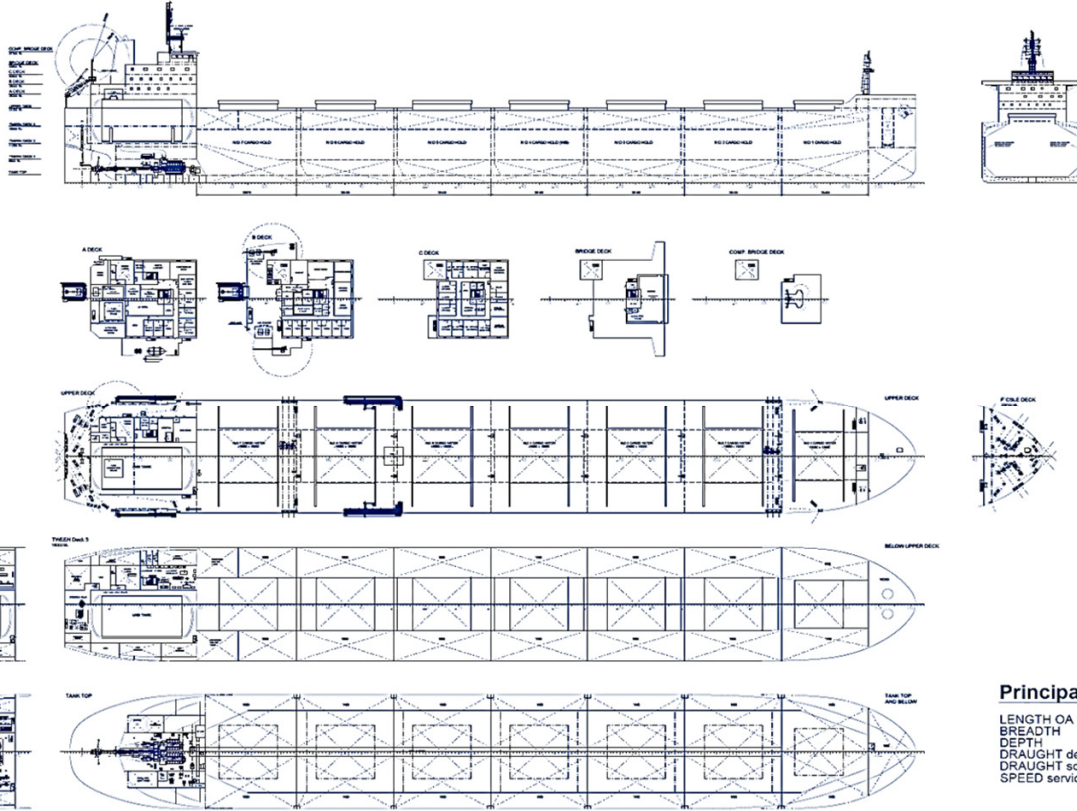
VESSEL SPEED/CONSUMPTION IS GIVEN AND DETERMINED BASIS "GOOD WEATHER" CONDITIONS, WHICH ARE DESCRIBED AS WINDS NOT EXCEEDING BEAUFORT SCALE 4, AND COMBINED WIND DRIVEN SEA AND SWELL NOT EXCEEDING COMBINED SEA HEIGHT OF 1.25 MTRS.

Otherwise as per final BUILDERS specification AND MODEL TANK TEST.

Grain fitted (SOLAS)	YES
Suez Canal fitted	YES
Panama Canal fitted	YES
Australian hold ladders	YES
Deck space without obstacles	YES
Hold space without obstacles	YES
Vessel is suitable for grab discharge	YES
Type of opening hatch covers (side sliding or fore and aft folding type)	SIDE ROLLING TYPE TWO PANEL

Figures/Details are all "About" and given in good faith

A full time charter description including Baltic questionnaire and Charterers questionnaire to be part of the C/P and to be provided after results of sea trial tests and final speed / consumption figures to be confirmed during sea trials



**Principal Dimensions**

LENGTH OA	229.00 m
BREADTH	32.26 m
DEPTH	20.50 m
DRAUGHT design	12.20 m
DRAUGHT scantling	14.45 m
SPEED service	14.5 knots